

New Avonworth Primary Center (K-2)

Client since 2010

AVONWORTH SCHOOL DISTRICT

258 JOSEPHS LANE,
PITTSBURGH, PA 15237-1223
MR. BRAD WATERS,
DIRECTOR OF FISCAL
MANAGEMENT 412.369.8738

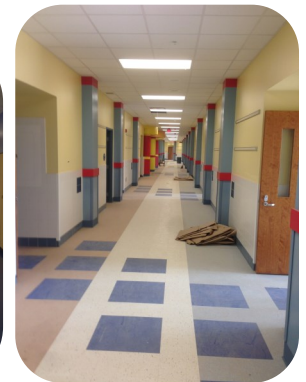
BID MAY 2012
TO BE COMPLETED AUG. 2014
TO SERVE 525 K-2 STUDENTS

83,975 SQUARE FEET
CONSTRUCTION COST: \$23.2 M
STATE REIMBURSEMENT: 19.6%

The two-level Primary Center is sited on the Elementary School campus on a plateau 50' below the school.

Elements

- Residential scale and theme.
- Grade level access on both floors.
- Core spaces - gym with stage, offices, music room, computer lab, library, art room, support services, cafeteria, and faculty room located near the entrance with easy access to each grade neighborhood.
- Expanded campus parking - 330 spaces.
- Sustainable site design, construction practices, water/energy systems, materials, school design.
- CO₂ monitors to regulate ventilation and remove particulates from the air.



HHS DR
Architects/Engineers

HHS DR ARCHITECTS / ENGINEERS

40 SHENANGO AVENUE, SHARON, PA 16146-1502

201 CENTURY BUILDING, 130 7TH STREET, PITTSBURGH, PA 15222-3413

800.447.3799 SHARON

HHS DR.COM

412.281.2280 PITTSBURGH

FGARGIULO@HHS DR.COM

ADOMETAKIS@HHS DR.COM

© 2015 by HHS DR, Inc. (#3626)